



ANTRIEBSELEMENTE

Double-arm / Double-disc pulleys



If performance is required

www.luetgert-antriebe.de

DOUBLE ARM PULLEYS | DOUBLE DISC PULLEYS FOR HEAVY AND WIDE DRIVES

Production of double-arm or double-disc pulleys according to individual customer specifications. For increased stability, we recommend having the drive pulley made of grey cast iron and with a double disc or double arm from a crown width of approx. 500 mm. With our optimal moulding process, we can mould all pulleys flexibly, quickly and without model costs and produce them ready for assembly in our own foundry. As a complete manufacturer, we machine the pulleys on state-of-the-art CNC machines according to the customer's specifications.

The drives are then perfectly balanced on our Schenk balancing machines. We also carry out balancing on a sub contract basis for our customers. We also offer surface treatments such as finishing or galvanising the drive pulley

Unit weights up to 6,000 kg, crown widths up to 1,000 mm and geometries up to a \varnothing 2,500 mm are possible without any problems. Large transmission ratios can be realised.

Materials

- Standard material: Cast iron EN-GJL-200 to EN-GJL-300 (GG-20 to GG-30) according to DIN EN 1561
- Alternative materials: Nodular cast iron (EN-GJS-400 to EN-GJS-600)
Cast steel (GS) or welded steel version

Designs

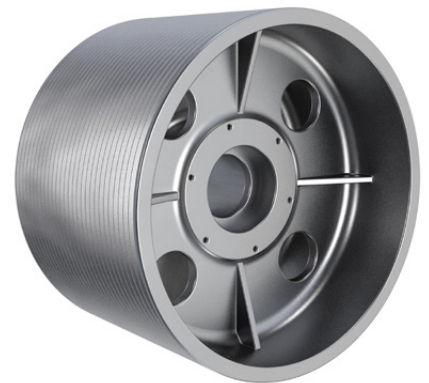
- V-belt pulleys, flat belt pulleys, toothed belt pulleys, flywheels
- Split pulleys

Shaft-hub connection

- Cylindrical bore with or without keyway
- Pre machined to accommodate couplings, flanges, clamping sets or TaperLock clamping bush connections

Mechanical processing

- Balanced as standard according to DIN 21940 in quality grade G16, G6.3 or G2.5
- All surfaces are primed to prevent corrosion
- Individual surface treatment and special painting possible
- Painting report, coating thickness measurement and cross-cut test according to customer specifications
- Detailed documentation of the surface treatment on request



PRODUCT OVERVIEW

EXTRACT

Drive pulleys

V-belt pulleys | V-belt pulleys | Flywheels | Grid pulleys | Timing belt pulleys | Rubberized Pulleys | Split pulleys | Aluminium pulley



Supplies for drive belts

TaperLock clamping bushes | Motor mounting systems | V-belts / Drive belts | V-belt metrology | Rubber suspension units
Oscillating mountings | Tensioner devices | Foundation blocks | Shafts and rolls



More information required?

www.luetgert-antriebe.de

